

# the Mirror

Volume 57, Number 2 • June 2025  
Mennonite Life • mennonitelife.org

## Quilts Connect

This year Mennonite Life joins our global community in commemorating the 500th anniversary of Anabaptism. We're using the resources in our archives and collections to reflect on the stories woven into the histories of our families, churches, and neighborhoods.



*This log cabin quilt was made in the late 1800s and donated to the Mennonite Life collection in 2014.*

Mennonite Life's collection contains 86 quilts, each with a unique "lineage." The log cabin quilt pictured here was made in the late 1800s and donated to Mennonite Life in 2014 by the maker's great-great-granddaughter. This quilt's history spans over a century with

the family. Though strikingly beautiful, the quilt served a practical purpose. Its fabric is soft and worn, with small rips and faded stains among the precise stitching.

In a 2005 article for the *Mennonite Quarterly Review* titled "From Cross to Cross-Stitch: The Ascendancy of the Quilt," Daniel Born reflects on the significance of quilts to Anabaptist identity, writing "No longer merely a bedwarmer or art object, the quilt now is increasingly connected to the community's own self-understanding."

Formerly a well-loved family heirloom, and now an object in a museum, the log cabin quilt holds a family's history.

## Mennonite Life Co-sponsors Young Center Conference: Early Anabaptism in Global Perspective

Mennonite Life joins the Young Center for Anabaptist and Pietist Studies in presenting **Early Anabaptism in Global Perspective: Past, Present, and Future at 500 Years.**

This conference, marking the 500th anniversary of the Anabaptist movement, will revisit early Anabaptism and give special attention to the global context in which it emerged and spread. Speakers will also consider how Anabaptist history has been received by churches and academics in more recent times and in varying contexts around the world.

**July 22–24**

**Young Center for Anabaptist  
and Pietist Studies**

400-402 Campus Rd.  
Elizabethtown, PA 17022

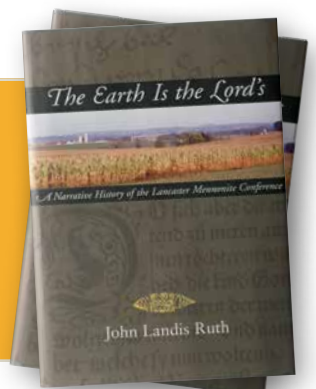
Find registration details at  
[mennonitelife.org/events](https://mennonitelife.org/events)

**PRE-ORDER  
NOW!**

See order form inside! ►

### ***The Earth is the Lord's: A Narrative History of the Lancaster Mennonite Conference – Updated Edition***

An updated third edition of John Ruth's classic retelling of Lancaster County Anabaptist history is available for pre-order until July 31.





## Director's Reflection: A Challenge

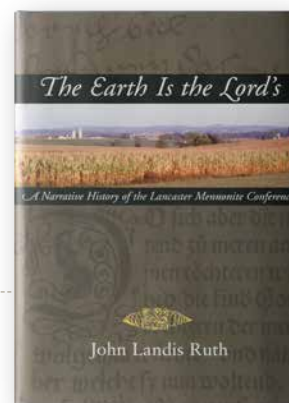
This month I conclude my role as Executive Director. Over the last seven years, I have been privileged to learn and lead, to get to know many of you, to work hand-in-hand with a team passionate about serving you and living out our community-impact mission. Mennonite Life's vision — a world where people learn their own and others' stories, across boundaries — remains relevant. In the U.S. social and political climate, getting people to view other people as enemies seems to be priority number one. This current surfaces in many congregations as well. We know what Christ said to do with enemies: love them.

I leave you with profound thanks and a challenge. Thank you for the many ways you have supported and engaged with Mennonite Life. Ongoing support, including financial support, is very much needed. And now for the challenge: I challenge you to replace disdain with curiosity; learn the story of someone you consider to be on an "opposite" from you, in whatever way you define that. Just see what happens.

Gratefully,

**Pre-order Now!** *The Earth is the Lord's: A Narrative History of the Lancaster Mennonite Conference* is an integral part of understanding Lancaster County and the part it plays in the complex history of Anabaptism. John Ruth's deeply researched storytelling is praised for its detail and imagery.

Mennonite Life offers a chance to discover or rediscover the story of Lancaster's Mennonite history. Pre-orders for a new, updated printing of the book are open until July 31.



## PRE-ORDER FORM

### *The Earth is the Lord's*

by John L. Ruth, – Updated Edition

Pre-orders must be postmarked by July 31, 2025. Or pre-order online at [mennonitelife.org/EITL](http://mennonitelife.org/EITL).

### Pre-order Price: \$105 + tax

Quantity: \_\_\_\_\_ x \$105 = \$ \_\_\_\_\_  
(Max. 6) Subtotal

Add Sales Tax + \$ \_\_\_\_\_  
(Subtotal x .06)

Add Shipping + \$ \_\_\_\_\_  
(Quantity x \$10)

**TOTAL DUE** \$ \_\_\_\_\_

☐ I will pick up my order at Mennonite Life.



## Mennonite Life

2215 Millstream Road, Lancaster, PA 17602  
717.393.9745 | [mennonitelife.org](http://mennonitelife.org)

Name(s) \_\_\_\_\_

Address \_\_\_\_\_

City \_\_\_\_\_

State \_\_\_\_\_

Zip \_\_\_\_\_

Phone \_\_\_\_\_

Email \_\_\_\_\_

☐ Check Enclosed (payable to **Mennonite Life**)

☐ Pay by Credit Card:

Credit Card # \_\_\_\_\_

Exp. Date \_\_\_\_\_

/

Security Code \_\_\_\_\_

*\*If you are a sales-tax-exempt book re-seller, contact Kevin at 717.393.9745 x106 for wholesale orders.*

*The Mirror is a newsletter published by Mennonite Life, 2215 Millstream Road, Lancaster, PA 17602; Abby Hershberger, editor. Phone: 717.393.9745; fax: 717.393.8751; e-mail: [storyteller@mennonitelife.org](mailto:storyteller@mennonitelife.org). Please send address changes to The Mirror, Mennonite Life, 2215 Millstream Road, Lancaster, PA 17602-1499.*

## Barry Lee art

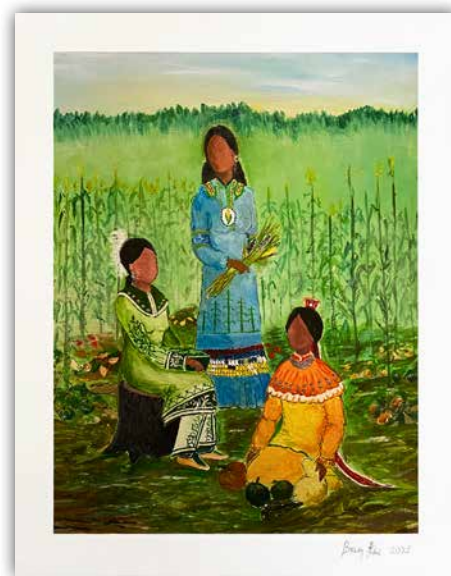
Mennonite Life museum stores now sell prints from Barry Lee, an artist who paints scenes telling Native American stories.

"It's very humbling if someone wants to take something you've created into their home," said Lee, a musician and artist of the Munsee Turtle Clan. His work is often sold at powwows, where he and his wife, Barbara, perform with the band Spirit Wing.

Lee's print titled *Three Sisters* refers to Native companion planting of squash, corn, and beans. It also tells the story of the Faceless Girl. "It is a story about a beautiful girl, who was so vain the Creator took away her ability to see her own beauty, so that she could see the beauty in others. It is a lesson in humility," Lee explained.

Lee is a member of Circle Legacy Center, a Lancaster nonprofit organization dedicated to empowering Indigenous people. He has shared stories and music at the 1719 Museum longhouse at Mennonite Life events.

"Countless stories and lore of Native America are an inspiration to my work and life," said Lee.



A self-taught artist of the Munsee Turtle Clan, Barry Lee paints scenes that tell Native American stories.

## New Online Research Options



The Martin E. Ressler Music Library totals over 3,000 volumes and is now searchable online

### ► Browse the Ressler Music Library, Mennonite Research Journal Articles, & more

Mennonite Life library staff and volunteers have compiled a **list of resources** for those interested in researching the history of Anabaptism, their church conference, or their congregation. The list includes physical resources in Mennonite Life's library and archives, as well as online links. The list is available at [mennonitelife.org/documents](http://mennonitelife.org/documents).

**The Martin E. Ressler Music Library**, donated to Mennonite Life in 1993, is available to the public in a searchable spreadsheet format for the first time. Totalling over 3,000 volumes, the collection contains a vast array of hymnals and songbooks from Mennonite, Amish, Brethren, and non-Anabaptist Christian musical traditions.

A searchable spreadsheet of **Mennonite Research Journal** articles by title, author, year, and subject, covering the years 1960–1969, is newly available as well. A spreadsheet for the years 1970–1977 is in progress. All visitors to Mennonite Life's website are welcome to use the spreadsheet. Accessing back

issues of the *Mennonite Research Journal* requires a Mennonite Life membership. Access these resources at [mennonitelife.org/documents](http://mennonitelife.org/documents).

If you have questions or would like help getting started with your search, reach out to Donna Stoltzfus, Library Assistant at [research@mennonitelife.org](mailto:research@mennonitelife.org) or 717-393-9745.





## Celebrating 50 years of the Biblical Tabernacle Experience

Join us in celebrating 50 years of the Biblical Tabernacle Experience! This summer the Visitors Center features exclusive products telling our story, including a new fraktur piece, *Priestly Blessing*, created by Lynn Sommer and available in both English and Spanish.



**Mennonite Life**

2215 Millstream Road  
Lancaster, PA 17602-1499

Nonprofit  
US Postage  
**PAID**  
Lancaster, PA  
#1551

### INSIDE:

- Quilts Connect
- Director's Reflection: A Challenge
- Pre-order *The Earth is the Lord's*, Updated Edition



## Executive Director Search

Mennonite Life seeks an Executive Director to guide our organization into its next chapter.

Experienced leaders who can lead in the context of our mission to "hold, honor, and share items and stories featuring the lived experiences and faith values of Lancaster Mennonites and interrelated communities" are encouraged to learn more at [www.mennonitelife.org/edsearch](http://www.mennonitelife.org/edsearch) or apply via email at [search@mennonitelife.org](mailto:search@mennonitelife.org).

*Mennonite Life thanks these generous business sponsors:*

